

GPS Chart Plotter With Built-in Dual-Frequency Depth Sounder **Chart Master Pro Series**

- **Advanced GPS Chart Plotting System Using Fast 300Mhz Arm Processor for Smooth, Fast Zooms and Screen Updates.**
- **Includes Powerful, Built-in 600 Watt Dual Frequency Depthsounder/Fishfinder.**
- **Includes Hi-Accuracy WAAS Differential GPS Antenna .**
- **Features 7" Wide Sunlight Viewable Color Display with 16:9 Format—Perfect for Split-Screen Views.**
- **Easily Connects to Optional Radar or AIS Receivers—Making the Pro Series Complete Navigation and Fishing Tools.**
- **Uses latest C-Map by Jeppesen Max Cartography, Complete With Aerial Pictures and Safety Route Checking.**



Interphase's new Chart Master Pro and Chart Master iPro add powerful 600 Watt dual-frequency depthsounder/fishfinder capabilities to our popular GPS chart-plotters. The Chart Master iPro includes an internal WAAS GPS antenna, while the Pro comes complete with an external antenna. The wide, sunlight viewable display gives you the "big picture" while being easy on the eyes and providing truly useable side-by-side split screen displays.

The Chart Master Pro Series WAAS/GPS receiver gives performance with amazing accuracy - typically better than 3 meters! Its powerful 300 Mhz ARM processor provides a wealth of important navigation features, like north or course-up map orientation, tide predictions, 3-D runway displays, many advanced side-by-side navigational and fishing displays, operation in lat/lon or TD's, and much more—all at lightning-fast speed!

The built-in fishfinder comes complete with advanced features such as A-Scope to see sonar data in real time, selectable Zoom ranges, Bottom Lock, White Line, Fish Symbols relating to actual fish sizes, water speed and water temperature. The Pro Series also include a full range of alarms to warn of shallow water, deep water, fish, and temperature range.

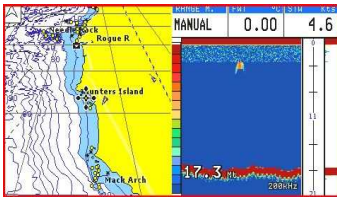
Both models feature a unique forward-looking alarm, using cartography data, which can be set to monitor the course up to 1 mile ahead for dangerous obstructions or shallow water. The Chart Master Pro Series boast an incredible 64 MB of internal memory to store up to 500 waypoints, 25 routes of up to 50 waypoints each, and over 5,000 track points using seven different colors. Connect one of Interphase's optional radar receivers and you'll have a complete GPS/Depthsounder/Radar system—all in one easy to use compact package!

Even though ruggedly built, with powerful navigation tools and professional features, the Chart Master Pros are easy to use and understand. In the Interphase tradition, both models represent great values.

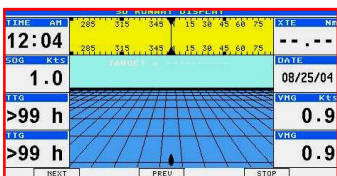
NEW GPS/FISHER COMBOS



Built-In World Wide Background Map With Satellite Images



Side by Side Split Screen with GPS Map on Left and Fishfinder on Right. The Wide Display is Perfect for Split Screen Views.



3D Runway Display, showing current bearing on simulated compass, along with important NAV information.

C-MAP by JEPPESEN MAX CARTOGRAPHY



TRANSDUCERS



THRU-HULL



TRANSOM MOUNT

INTERPHASE

Chart Master™ Pro Series

Interphase's new Chart Master Pro Series combine an advanced GPS Plotter with a powerful 600 Watt Dual Frequency Depthsounder. The convenient combination optimizes dash space and minimizes cabling and clutter. Connect an optional Interphase radar module or an A.I.S. receiver for a complete Nav Station in one convenient display. The size and ruggedness of the new Chart Master Pros make them perfect for mounting on flying bridges, center consoles, in cockpits and at the helm of serious sailing vessels. The new Chart Master Pro and Chart Master iPro come complete with a world wide background map using satellite images and accept C-Map by Jeppesen's latest Max Cartography including valuable aerial photographs.

GPS Plotter

- Uses latest MAX Cartography
- Built-in Worldwide Background Map with Satellite Images and Multi Languages
- Internal or External WAAS GPS Antenna
- 500 Waypoints, and 25 Routes With Up To 50 Waypoints/Route.
- 7 Color Tracks With Up to 5,000 Points
- 16 Types of User Marks
- Forward Looking Chart Depth Alarm
- Automatic Information on Cartographic Objects
- Smooth Zooms With Turbo Mode For Ultra Fast Changes.
- Unique Safety Route Check Feature
- Simulation/Demo Mode
- M.O.B. Function

Depthsounder/Fishfinder

- Dual 50 and 200 kHz
- 600 Watts RMS (4,800) Peak-Peak
- Auto Range, Gain, Shift and Ping Rate
- Zoom: X2, X4 and by Selected Range
- Bottom Lock and White Line
- Adjustable STC
- Fish Symbol: Shows Size and Depth
- Water Speed and Trip Log
- Surface Water Temperature
- A-Scope "Real Time" Display
- Alarms: Shallow and Deep Depth, Fish and Both Upper and Lower Temp Alarms
- Side by Side Split Screen Views of 50khz and 200khz
- Side by Side Split Screen View of Chart and Fishfinder

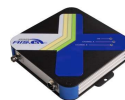
WWW.INTERPHASE-TECH.COM

Physical Specifications

- 480 X 234 WQVGA Resolution
- 7" TFT Sunlight-Color LCD.
- 260K Colors
- 0 - 35 VDC , < 1 Amp Power
- Non Volatile Battery Back-up
- Adjustable Backlight
- Backlit Keypad
- A.I.S. Interface
- Radar Engine Interface
- NMEA Autopilot Interface
- NMEA 0183 Interface
- Operating Temp: 0 to +50° C
- IP Rating: IP56 (Splash Proof)
- Compact Dimensions: 9.4"W X 5.9"H X 1.6"D, Approx. 2 lbs



RADAR ANTENNAS



A.I.S. RECEIVERS

Optional Radar & A.I.S. Receivers

Interphase offers a selection of optional radar antennas with output power between 2 and 4 kW and maximum ranges from 24km to 48km. The Chart Master Pro Series can easily be connected and display A.I.S. data from many popular A.I.S. receivers, (EasyAIS shown above) using the high-speed serial port.

INTERPHASE
Forward Looking Technology