

INTERPHASE

SONAR PROFILES

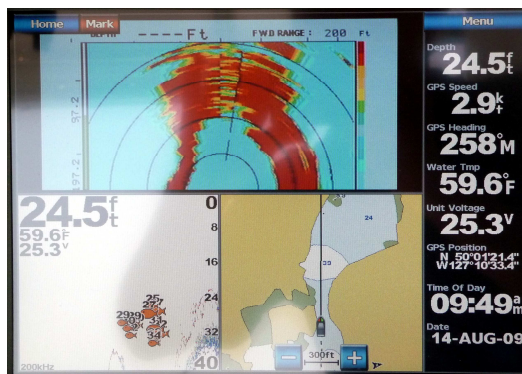
A true customer report received at www.interphase-tech.com

“Interphase Forward-Looking Sonar Gives Us Confidence to Go Where We Would Otherwise Not Dare to Venture”

Northwest Cruiser Uses SE-200C Displayed on Garmin Chart Plotter/Video Monitor to Safely Navigate Narrow Passages in Alaska & British Columbia

Rob Bonner likes to use his beautiful Selene 47 *Maritime* to explore remote Alaskan and British Columbian waters; places probably visited by more bald eagles and grizzly bears than sailors. More often than not, this means navigating his vessel through dangerous passages more suited to kayaks than luxury trawlers.

Fortunately, *Maritime* is outfitted with a “secret weapon” that gives him the confidence to cruise where other boats fear to tread. Bonner recently installed an Interphase SE200C “Black Box” forward-looking sonar, capable of displaying an underwater “radar” picture of what’s ahead of the vessel. “We enjoy exploring narrow passages, small coves and secluded anchorages,” said Bonner. “Our Interphase forward-looking sonar gives us the confidence to go where we would otherwise not dare to venture. Cruising friends are amazed at where we go, and often follow us through tight passages once they know we’re navigating with forward looking sonar,” he added.



Interphase SE-200C on Garmin Plotter



SE-200C on 19” monitor

Bonner uses his SE200C hooked into a Garmin 2512 chart plotter and displayed along with his Garmin chart plotter and straight-down sounder on the flybridge. “This is one of my favorite configurations so I can quickly switch to it when I am preparing to navigate a narrow passage. I mounted a second control unit for the SE-200C nearby.”

Bonner also displays sonar targets from the SE-200C on one of *Maritime*’s 19-inch Argonaut video monitors. He has the VGA input for this monitor coming from a video selection switch. One of the inputs to that switch is the VGA output from the SE-200C which goes through a splitter. This VGA output also goes to an 8.5” monitor on the upper dash, allowing Bonner to display the forward-looking sonar on either or both pilothouse screens.

With no moving parts, Interphase SE-200C’s exclusive forward-looking sonar technology scans horizontally ahead of the vessel to detect underwater rocks, fang-toothed channels or submerged objects. The well-planned installation of this technology aboard *Maritime* provides this critical information where it’s needed most — and lets Bonner and his crew cruise safely through some of North America’s most secluded — and challenging — waters.

Interphase Technology Corp • (831) 477-4944 • www.interphase-tech.com