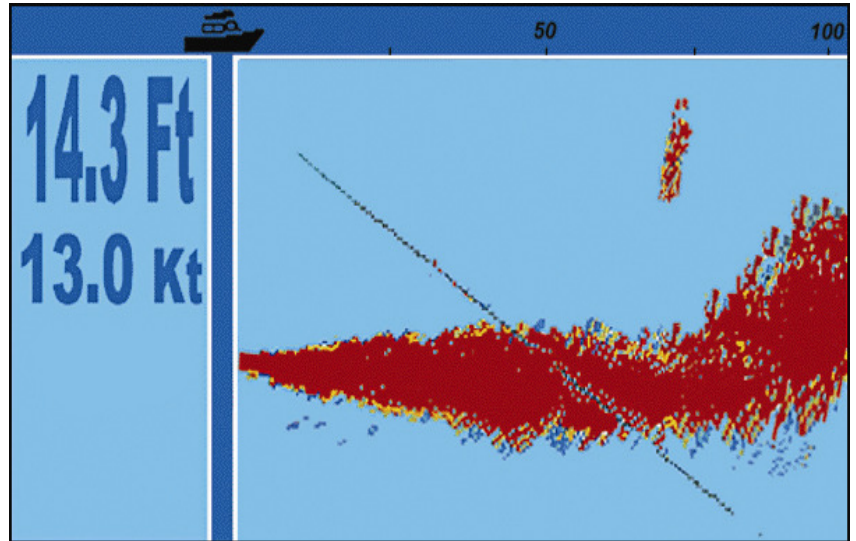


Affordable Forward Looking Sonar

INTERPHASE ESCORT™

- ◆ **Low Cost and Easy to Use**
- ◆ **Looks Forward Up to 1,200 ft and Downward to 600 ft.**
- ◆ **Flexible Display Options**
- ◆ **Easy Second Station Installation**
- ◆ **Ideal for both Sail and Power Vessels**
- ◆ **Small, Easy to Install Transducer**
- ◆ **Avoid Rocks, Reefs and Other Underwater Obstructions**



INTERPHASE ESCORT

Split Screen Forward View Shows Digital Depth and NMEA data on left and a Shallowing Bottom approximately 75ft ahead of the boat on the right side

Interphase Technologies introduces Escort™, a new high quality forward vertical scanning sonar, providing superior underwater collision avoidance, at a price lower than ever before.

Working like an underwater radar, with forward ranges to 1,200 ft and down looking ranges up to 600 feet, the new ESCORT has the power and features to help avoid semi-sunken containers, whales and icebergs in offshore waters, or to help avoid rocks, coral reefs and other obstructions in more shallow coastal regions.

Designed for easy installation in today's modern vessels, the Interphase Escort™ comes complete with a remote keypad and display connections for VGA, composite video and a special sunlight viewable Interphase 7" display with integral keypad.

Owners can use existing onboard displays, add a new VGA or composite video display or select the optional Interphase Sunlight Viewable 7" display with integral keypad. The composite video output connects to many

popular multifunction displays from manufacturers such as Garmin, Raymarine, Furuno, Simrad and others. Owners can also utilize the VGA output to connect to various flat panel monitors from Nauticomp, VEI, Ambient Nav - even inexpensive computer monitors.

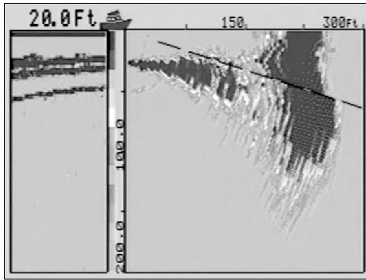
The new Escort™ comes complete with a thru-hull or transom mount transducer using Interphase's pioneering and phased array technology. The small transducer has no moving parts and installation is easy. The Escort™ also includes a sonar module, remote keypad with 10' of cable and 10' VGA and video connection cables.

This powerful and affordable sonar also has a full set of useful features including Auto Range, Auto Gain, Forward Range Expansion, Down and Forward Alarms, NMEA Depth Output, NMEA GPS Input, Keel Offset and choice of Sunlight, Day or Night Color Palettes.

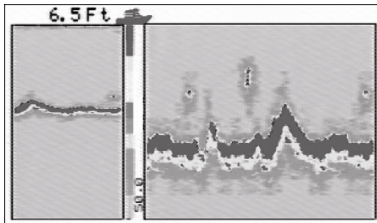
Compare with systems costing many times more. Contact your local dealer or Interphase today!

NEW FAST FORWARD LOOKING SONAR

INTERPHASE ESCORT™



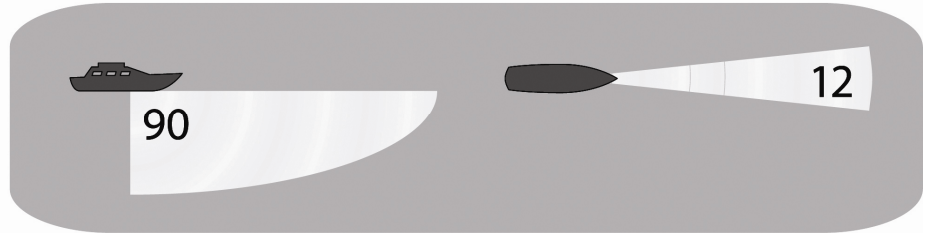
The above window shows the split screen vertical scan mode. On the right side of the display the forward scanning beam shows bottom at 28ft and a large obstruction ahead at approximately 250ft. The left side of the display shows a conventional downlooking view with the bottom getting more shallow.



The Escort™ can operate as a conventional downlooking color depthsounders as shown above and can reach depths to 600ft. Split screen view shows normal bottom view on left and 4X zoomed image on the right.

Scanning vertically from just below the surface to directly beneath the boat, the powerful Escort™ can detect changing bottom conditions up to several hundred feet beyond your boat and can scour the depths up to 600 feet below your keel. An easy to use remote keypad allows optimum adjustments and an optional external alarm can be set to warn of upcoming obstructions or shallowing conditions. The affordable Escort™ works in partnership with the ships radar to show the world both above and below the water.

Long Range Forward Scan Coverage



Built to Work, Built to Last

- Available with Thru-hull or Transom Mount Transducer
- Over 3,600 Watts Peak to Peak Power (450 watts rms)
- 1,200 Ft Forward Range
- Bottom Depths to 600 Ft.
- 200khz Operation
- Forward Vertical Scale Expansion
- Scanning Beam: 12°
- 12 Colors—to indicate signal strength
- Auto Range and Auto Gain
- US/Metric and Nautical Settings
- NMEA 0183 input/outputs
- Forward and Downlooking Alarms
- Optional Loud External Alarm
- Sun/Day and Nighttime Colors
- Extend Display and Keypad cables up to 200'
- Full Screen Vertical, Full Screen Down and Split Screen Modes
- 4X Zoom in Downlooking Mode
- USB Software Upgrade Capability
- Simultaneous Two Station Capability
- Low Power: 10 - 16 VDC @ 0.5Amp.

