

# INTERPHASE

## Chart Master™ 169CS

**WIDE PANORAMIC SCREEN GPS CHART PLOTTER  
WITH FORWARD LOOKING DEPTH ALARM**



The image shows the Interphase Chart Master 169CS GPS chart plotter. It features a large, wide panoramic color display showing a nautical chart of the North Pacific region. The device has a black plastic casing with several control buttons on the right side, including a directional pad and function keys like 'PAGE', 'GO TO', 'MENU', 'HOME', 'ENTER', and 'CLEAR'. The brand name 'INTERPHASE' is visible at the top of the screen.

- *Wide Display with 16:9 aspect ratio. Same ratio as used in Hi-end Digital TV and Computer Monitors*
- *Fast 200Mhz RISC Processor for super-fast zooms and screen updates.*
- *12 Channel WAAS/GPS receiver for outstanding accuracy.*
- *USB interface for future accessories or software upgrades.*
- *Uses C-Map NT+ Cartography*

***The Wide One!***

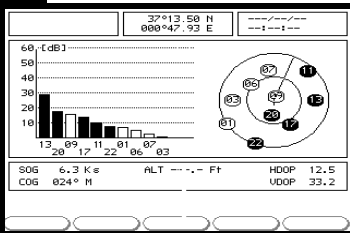
Interphase's new Chart Master 169CS offers cutting-edge navigation features with a gorgeous panoramic color display. The wide, sunlight viewable display gives you the "big picture" while being easy on the eyes and providing truly useable side-by-side split screen displays. The Chart Master 169CS's unique forward-looking alarm can be set to monitor the course ahead for dangerous obstructions or shallow water.

The Chart Master 169CS's 12 Channel WAAS/GPS receiver gives DGPS-like performance with amazing accuracy - typically better than 3 meters! Its powerful 200 Mhz RISC processor provides a wealth of important navigation features, like north or course-up map orientation, tide predictions, 3-D runway displays, split screen map plus depth display (with NMEA depth data), operation in lat/lon or TD's, and much more -all at lightening-fast speed!

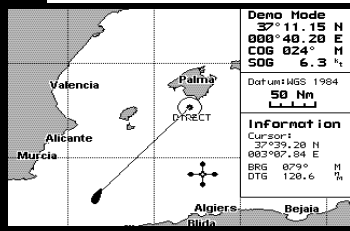
The Chart Master 169CS boasts an incredible 16 MB of internal memory to store up to 500 waypoints, 25 routes of up to 50 waypoints each, and over 5,000 track points using seven different colors. Interphase's unique flash and non-volatile memory with battery backup, guards against the loss of important data.

Even though ruggedly built, with powerful navigation tools with professional features, the Chart Master 169CS is easy to use and understand. In the Interphase tradition, it represents a great value for the money.

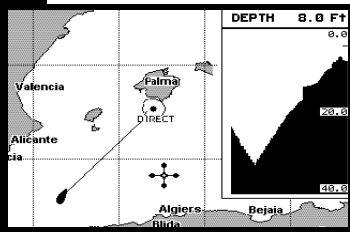
**INTERPHASE**  
*Forward Looking Technology*



*Status Screen shows all satellites being received and their relative signal strength. Helps to easily determine if unit is acquiring satellites*



*Full and Split Screen Chart Display. Shows position of boat and course and distance to selected waypoints.*



*The Chart Master 169CS will accept depth information from a "Smart Transducer" or other NMEA source and show a split screen view of graphical depth information.*



*Rear view showing Quick-Disconnect Mount.*

# INTERPHASE Chart Master™ 169CS Chart Plotter

The Chart Master 169CS is designed for versatility and easy integration into a full bridge system, with two serial ports and an advanced USB for connection to autopilots or a variety of other NMEA devices. With a waterproof cover protecting your C-MAPNT+ C-cards™, this new Chart Master can deliver a wealth of important electronic chart data, including spot soundings, depth contours, navigation aids (with "Quick Info"), navigational landmarks, hazards and more. C-MAP's Ports and Tides™ Info even puts important information – such as tidal stage/direction or the location of marina services, fuel docks, restaurants or medical facilities – right at your fingertips.

## Cartographic Functions

- Worldwide Chart Coverage
- Depth, Distance, Speed Unit Selection
- Depth Limits & Sounding Range
  - Natural Features, Rivers and Lakes, Cultural Features, Land Marks, Tides and Currents, Bathymetric Lines, Spot Soundings, Bottom Type, Ports and Services, Attention Areas, Tracks and Routes, Lights, Buoys, Beacons, Signals, Cartographic Objects, Names, Compass, Lat/Long grid, Chart Boundaries, Way Point Icons,
- User Selectable Datum
- Built-in Worldwide Background Chart

## Specifications

- 500 Waypoints or Marks
- 25 Routes with 50 Waypoints/Route
- 5000 Track Points, 7 Color Tracks
- 16 Types of User Marks
- 480 X 234 Pixel Resolution
- 7" TFT Sunlight-Color LCD.
- 256 Colors
- 0 - 35 VDC , 7.5W Power
- Non Volatile Battery Back-up.
- Adjustable CCFL Backlight
- Backlit Keypad
- Uses New C-Map NT+ Cartography
- NMEA 0180/1083 Autopilot Interface
- NMEA 0183 Interface
- CE: EN60945
- Compact Dimensions: 9.4"W X 5.9"H X 2.6"D, Approx. 2 lbs.

## Special Functions

- Automatic Information on Cartographic Objects
- Port Information
- Goto Nearest
- Tide Information
- Simulation/Demo Mode
- M.O.B. Function
- North-up or Course-up
- Forward Looking Depth Alarm
- Compatible with C-Forecast™

## Report Functions

- Route Data Report
- User Points List
- GPS Data Page
- Navigation Data Page
- Graphic Data Page

## Powerful 12 Channel WAAS/GPS Antenna/Receiver



Receiver:	L1, C/A code
Channels:	12
Max. Solution Update :	1/sec.
Cold Start (avg):	45 sec
Hot Start (avg)	8 sec
Max. Altitude:	<60,000'
Accuracy:	< 3 Meters, 95% of time
Cable Length:	33 feet

**INTERPHASE**  
*Forward Looking Technology*