

# INTERPHASE

TECHNOLOGIES, INC.  
*Forward Looking Technology*

TITLE: SE200 UNIT SOFTWARE UPGRADE INSTRUCTIONS

EQUIPMENT AND TOOLS REQUIRED:

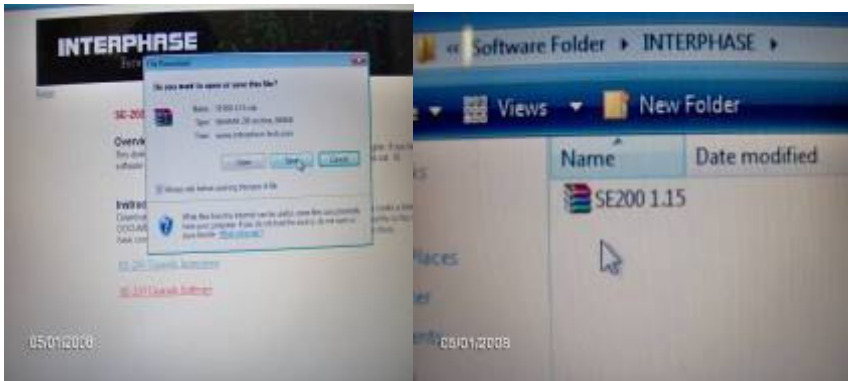
1. COMPUTER OPERATING SYSTEM: WINDOWS XP HOME EDITION or VISTA
2. USB Download Cable (P/N 04-1057-000 -TID60000532)
3. SE200 Keypad unit
4. Display Unit (VGA or Video)

REFERENCE DOCUMENTS:

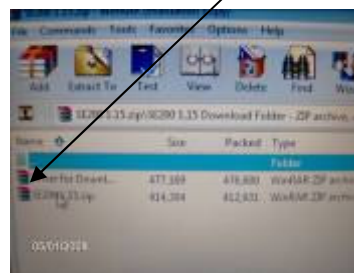
1. SE200 Software upgrades instruction procedure
2. SE200 Operations Manual

PROCEDURE:

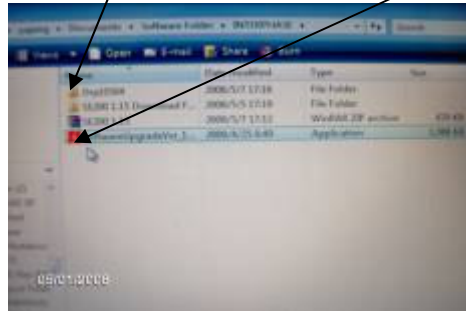
1. Download new software to your PC from INTERPHASE Website /Customer Support/SE-200 Software Download. We suggest you create a folder in your “MY DOCUMENTS” folder titled ‘INTERPHASE’ and Save the Zip file to this folder.



2. Unzip (Extract) the zipped software download file to the same INTERPHASE directory that you created. You should then see two Zip files: Driver for Download and SE200 1.15



3. Unzip (Extract) the each Zip file: **Driver for Download** and **SE200 1.15** to Original files (You can specify where the files are located)



#### 4. Driver Installation from USB port

a. Open the front panel of the SE200 unit, then connect the USB Cable to the USB port on the logic PCB board of the Interphase SE200 unit, and then plug the cable in to the USB port of the computer.



b. Plug the USB connector from the computer USB port to the USB connector of the SE200 unit.

c. Hold the keypad F1 key and press the PWR key at same time,

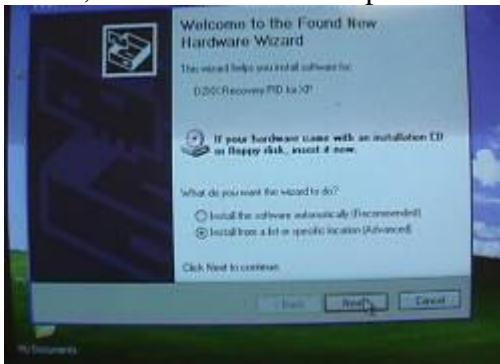


It then should go to the units Download page.

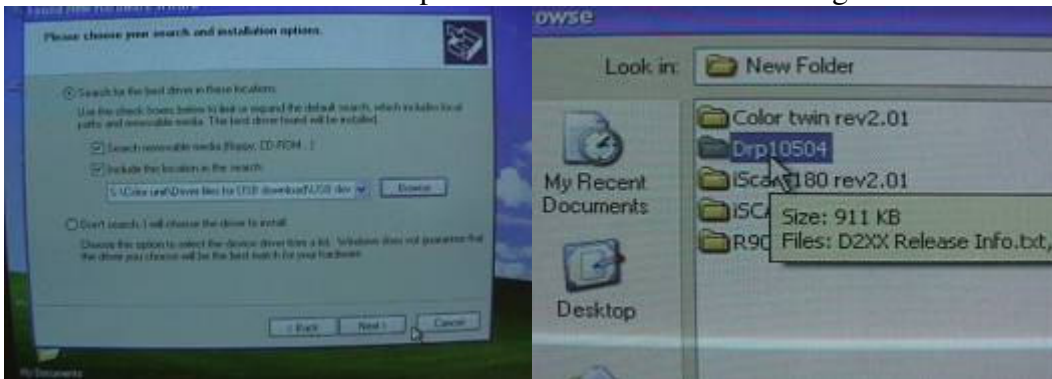
d. After the unit powers on, the computer screen will show: "Found New Hardware D2XX Recover PID for XP" (double click the icon, and go to Hardware wizard).



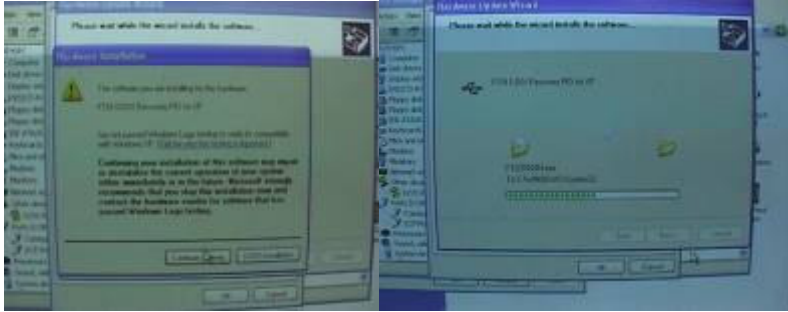
e. Follow the below directions to install drivers (you specify where driver is located) Select; "Install from list or specific location" go to next.



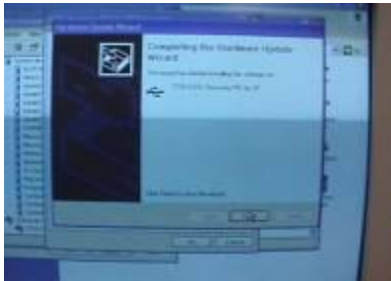
Select Browse to find the file Drp10504\FTXPRCVR.exe. Then go to next.



Select continue the computer will start installation the D2xx drivers from the folder of Drp10504 directory.

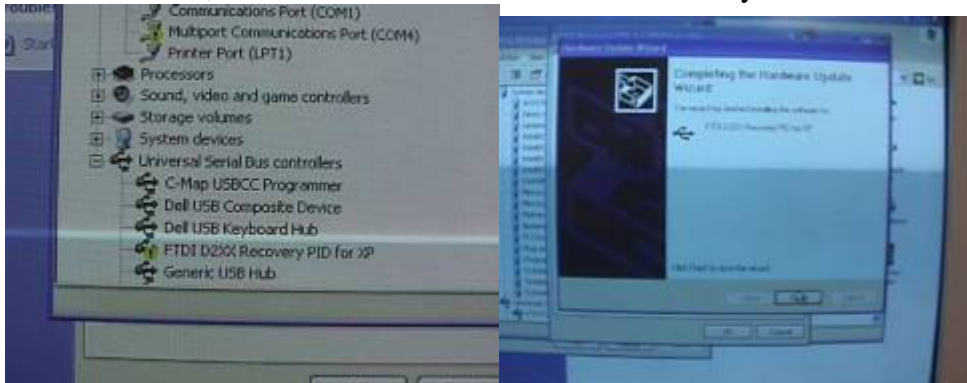


Select finish.



f. **Turn off the computer and restart.** Follow the prompts below to check if the drivers are installed successfully:

Under Control Panel -> System -> Hardware -> Device Manager -> Universal Serial Bus Controllers, there should be a "FTDI D2XX Recovery PID for XP" entry.



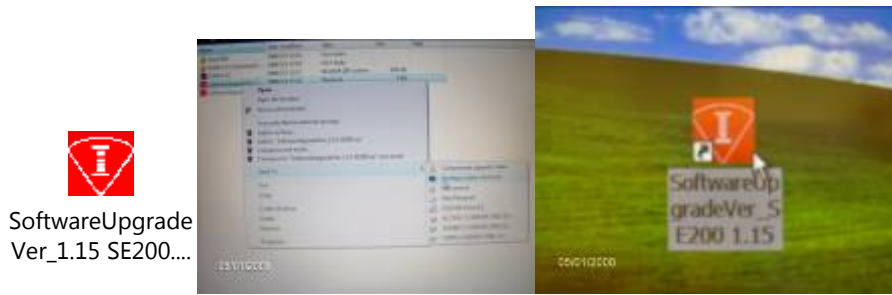
If you see this, you're done, go to Item 5 to upgrade the software.

Also if the driver is installed correctly, you should see: Under Control Panel -> System -> Hardware -> Device Manager -> Ports (COM & LPT) there should be an entry called USB Serial Port (COM3) or multiport communications port (COM4)



## 5. Software upgrading

Click the red icon of the Application file or make a short cut icon to the desktop



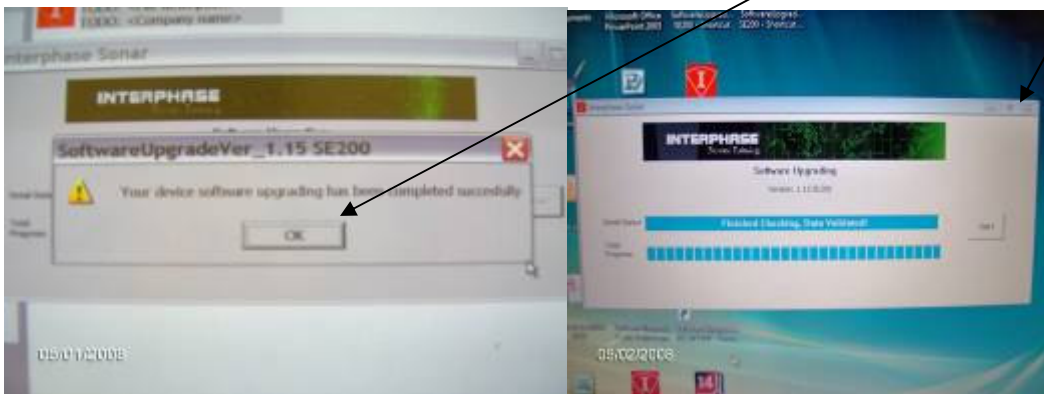
Double click the red icon go to the download interface, then click the start to run the download process.



After finishing downloading the software the display will show:

**“Your device software upgrading has been completed successfully “**

Also should waiting hear a long beep from the unit and then Click OK .Click the X to closed the Download interface window.



Unplug the USB cable from the connector of the SE200 UNIT.


**Press and hold the PWR key about 5 seconds to turn off the unit completely.**



**Press the F5 key and PWR key at same time to full reset the unit there must be an audible double 'beep'.**



### **Software Version Recheck**

Press the F1 key go to set-up menu then Press the F5 key (shown the set-up menu  of the right side of the display.) go to Software check page The newer version software will be displayed on the page of the units.



Note:

1. After updated the new version software if your original set-up is SE200A or SE200C It is necessary to go to the Software Setup page to reset the module per your requirement.
2. After downloading the software it is very important to turn off the unit completely (Press and hold the PWR key about 5 seconds) then verify the unit has been fully reset (Press the F5 key and PWR key at same time to full reset there should be an audible double 'beep'.
3. If the units original software version is below 1.12 you must download the new software from USB port first then change the oscillator (Located U106) value from 36.864MHZ to 18.432 MHz (On ECO 081207).